

# Cotton Dolman

a shirt pattern by [www.lacasadecrafts.com](http://www.lacasadecrafts.com)

## Supplies:

1 yard of 54" wide cotton fabric or 1.5 yards of 44" wide cotton fabric.  
Voile or lawn is recommended, or other lightweight cotton

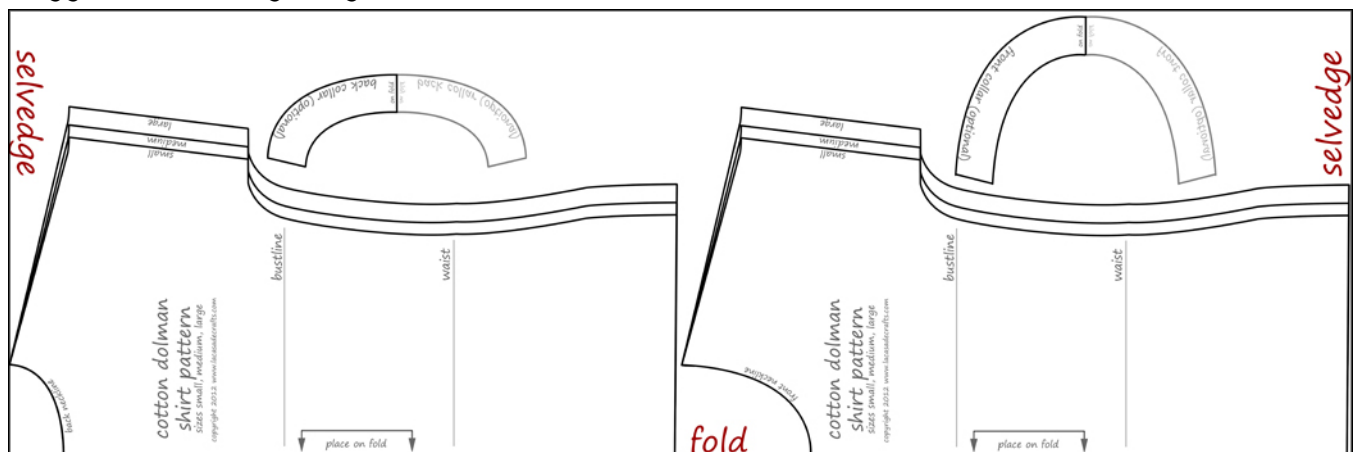
## Instructions:

1. Lay the bodice pattern piece along the fold
2. Cut out along the "back neckline"
3. Lay pattern piece along the fold again
4. Cut out along the "front neckline"
5. Sew front-to-back at shoulder seams with 1/2" seam allowance, with right sides together.
6. With a narrow 1/8" hem, fold the neckline edge under, then under again. Stitch.  
(or, see *alternate collar* below)
7. Sew front-to-back at side seams, with right sides together.
8. Measure bottom hem and press up; tuck edge under 1/4" and stitch.
9. With a narrow 1/4" hem, fold the sleeve hem under, then under again. Stitch.

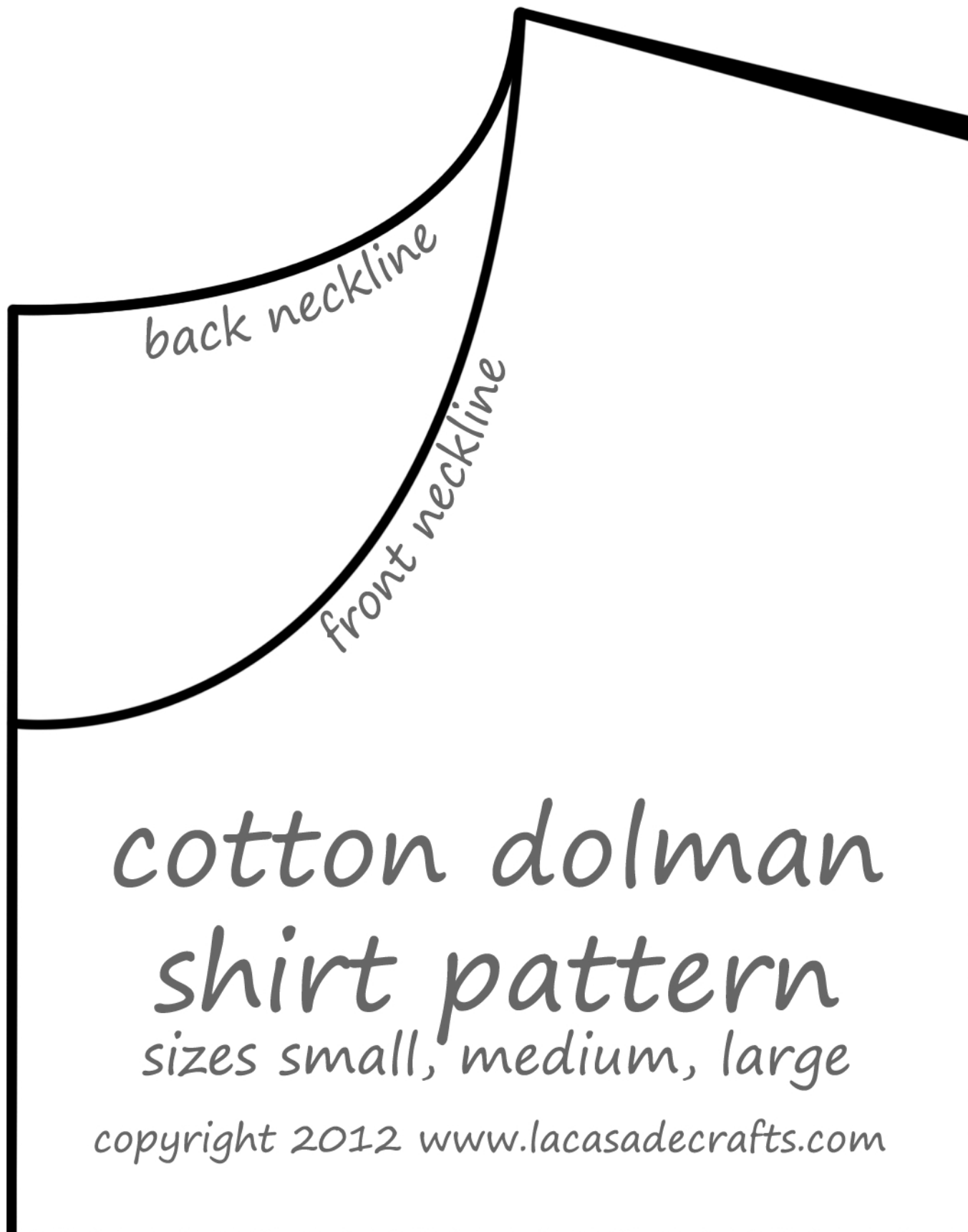
## Alternate collar:

1. Cut out 1 front collar piece and 1 back collar piece along the fold
2. Sew front collar piece to back collar piece at the shoulder seams
3. Pin collar to shirt, right sides together, matching shoulder seams. Stitch.
4. Clip curves
5. Press under 1/4" of raw edge of collar; pin in place. Topstitch along edge.

Suggested cutting diagram for 54" wide fabrics:



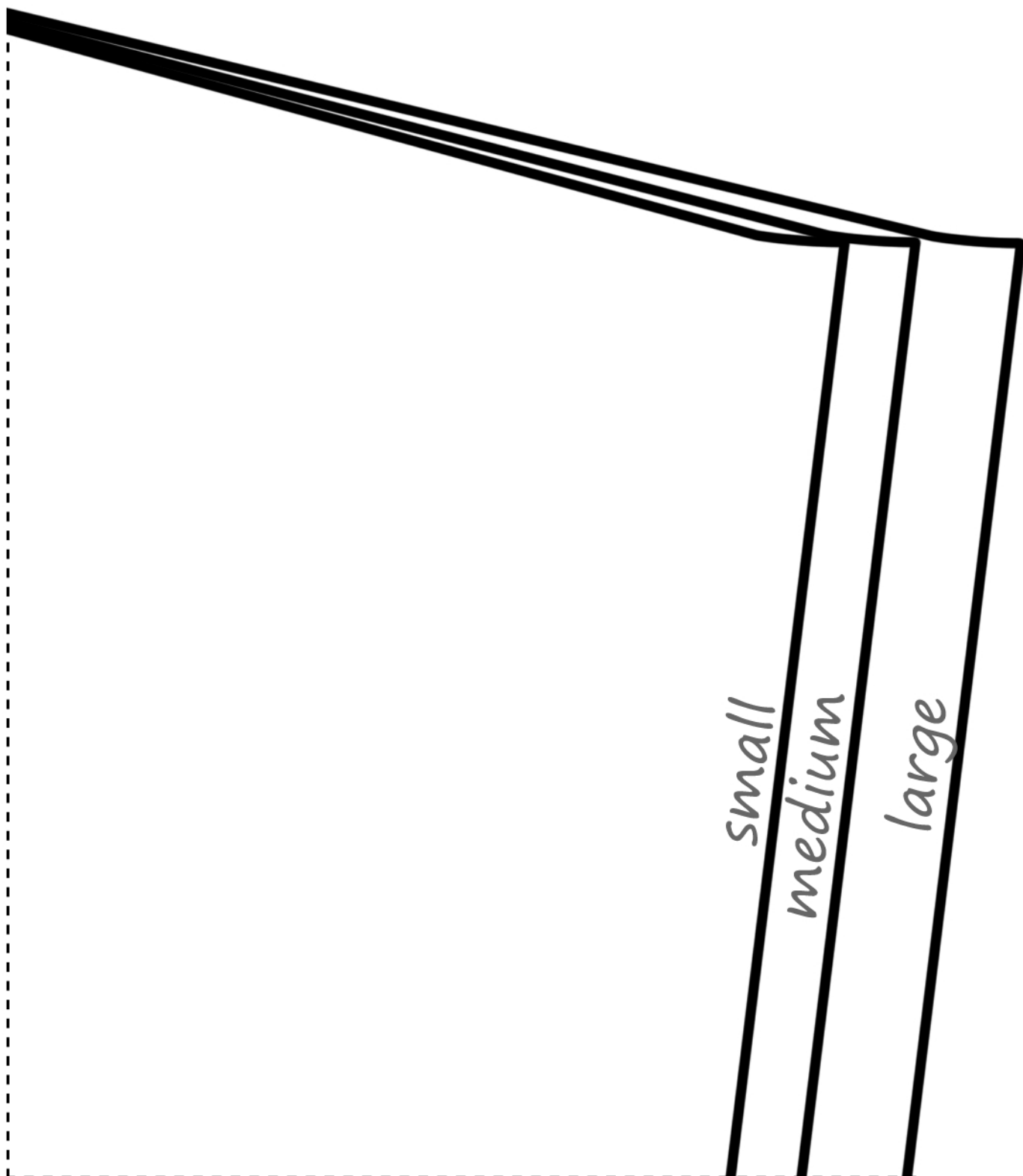
For 44" wide fabrics, the cutting layout is the same; but fold the fabric with the selvedges together instead of the cut edges together.



# cotton dolman shirt pattern

sizes small, medium, large

copyright 2012 [www.lacasadecrafts.com](http://www.lacasadecrafts.com)



bustline

waist

